



COMPANY INC.

solving your wire stitching needs for 125 years...

Bindery MateTM ***II***
ISP Stitching & Bindery Products

SUPPLEMENTARY MANUAL FOR:

MODEL 405A

MODEL 405B

MODEL 405C

WARNING!

Machine operators and others in the work area should always wear safety glasses to prevent serious eye injury from fasteners and flying debris when loading, operating, or unloading the stitcher machine.

Do not operate this stitcher head without all stitcher machine guards in place. Do not modify the guards in any way. Always disconnect the power supply before removing any guards for servicing.

Never operate the machine with wire feeding through the head unless there is stock above the clinchers, otherwise serious damage may result.

Always turn power off when making adjustments. Always disconnect the power cord before any disassembly work.

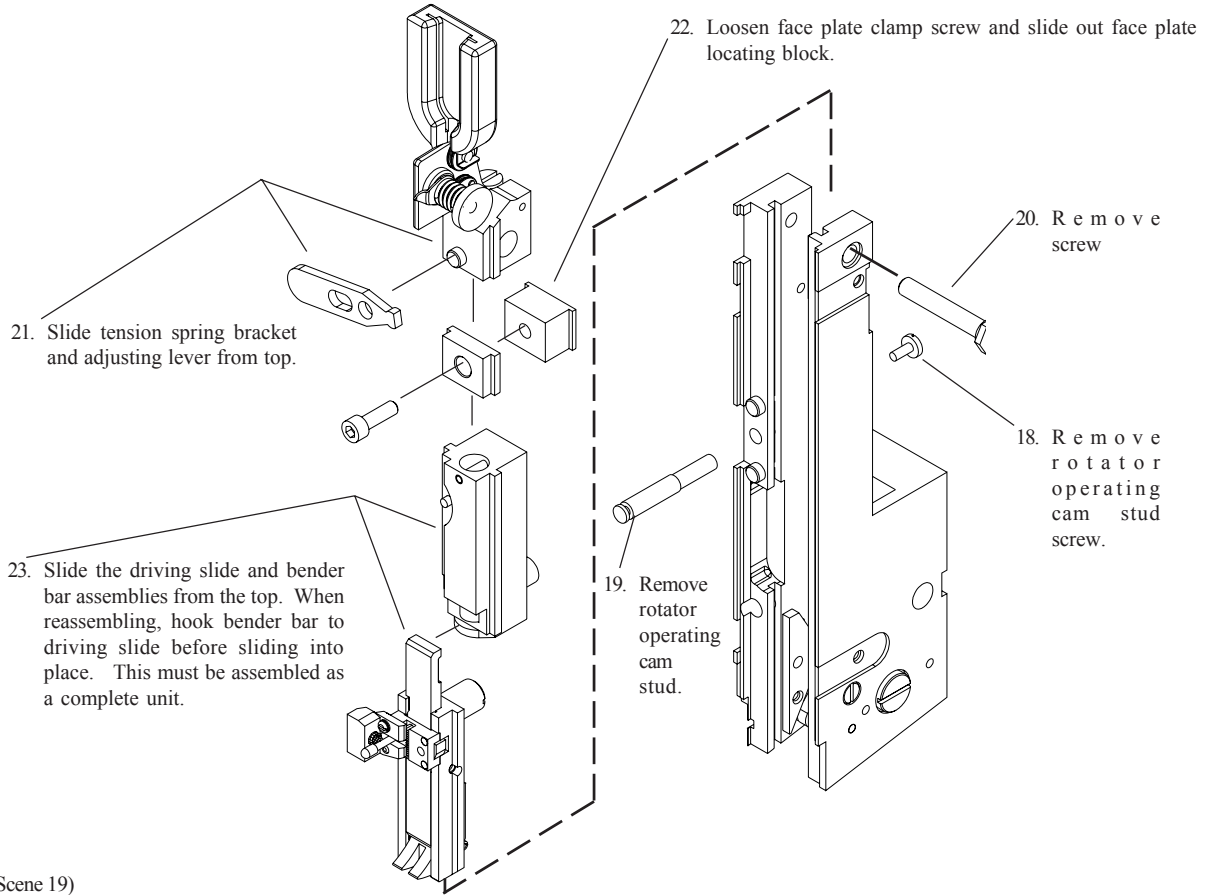
EYEWEAR



REQUIRED

REMOVING AND DISMANTLING M2000 HEAD

E



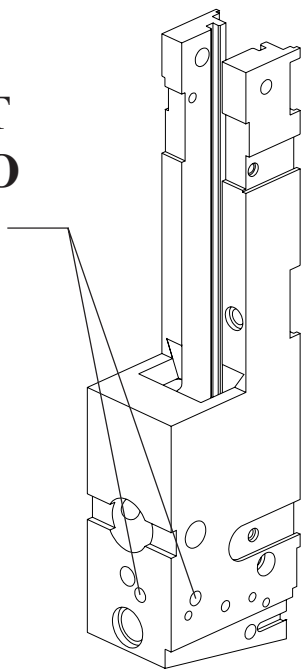
(CTTT2605T3 Scene 19)

(CTTT2605T3 Scene 19)

F

DO NOT REMOVE OR ADJUST THESE TWO SCREWS.

The screws are factory set to control the supporter lever location.



(CTTT2605T3 Scene 21)

G

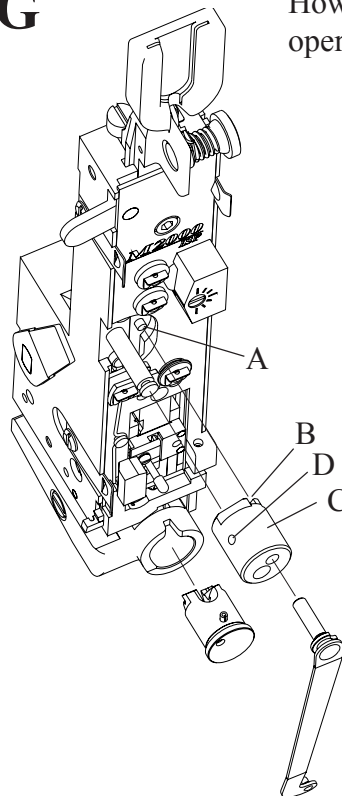
How to Install rotator operating cam

Caution

When reassembling, make certain that pin (Index A) is visible and is aligned with slot (Index B) of rotator operating cam (Index C). If not assembled in this way, the bonnet casting will crack or break on the next cycle under power. It is recommended that the stitcher be cycled by hand to test that proper reassembly procedure has been followed.

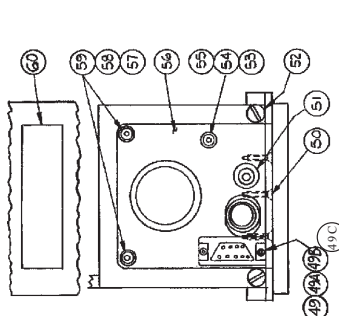
NOTE

WHEN MOUNTING MODELS 405A, 405B, AND 405C IN AN INVERTED POSITION THE THREADED PLUG IN LUBE HOLE "D" MUST BE REMOVED AND INSERTED FROM THE OPPOSITE SIDE. THIS WILL PERMIT LUBRICATING IN THE INVERTED POSITION.

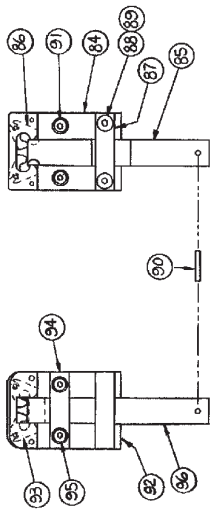


(CTTT2605T3 Scene 20)

35A-37A

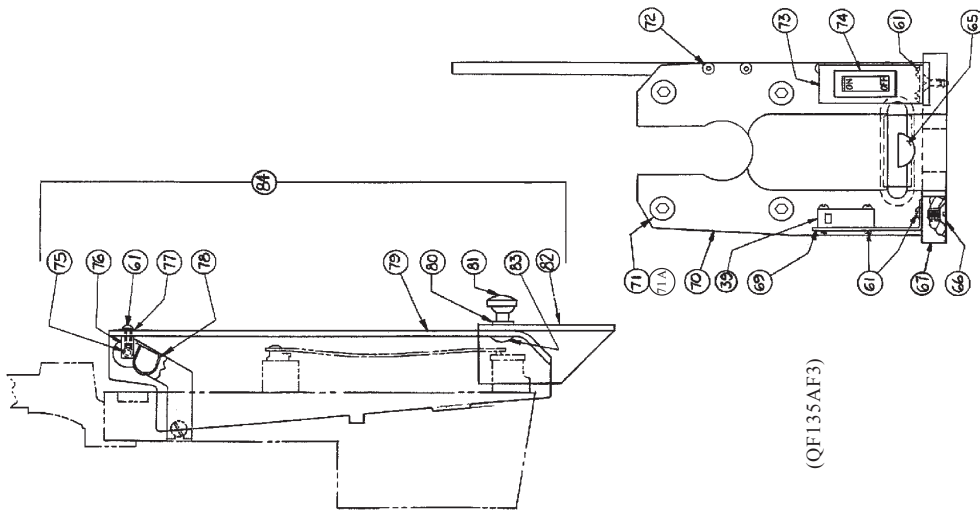


(QF35AF2)

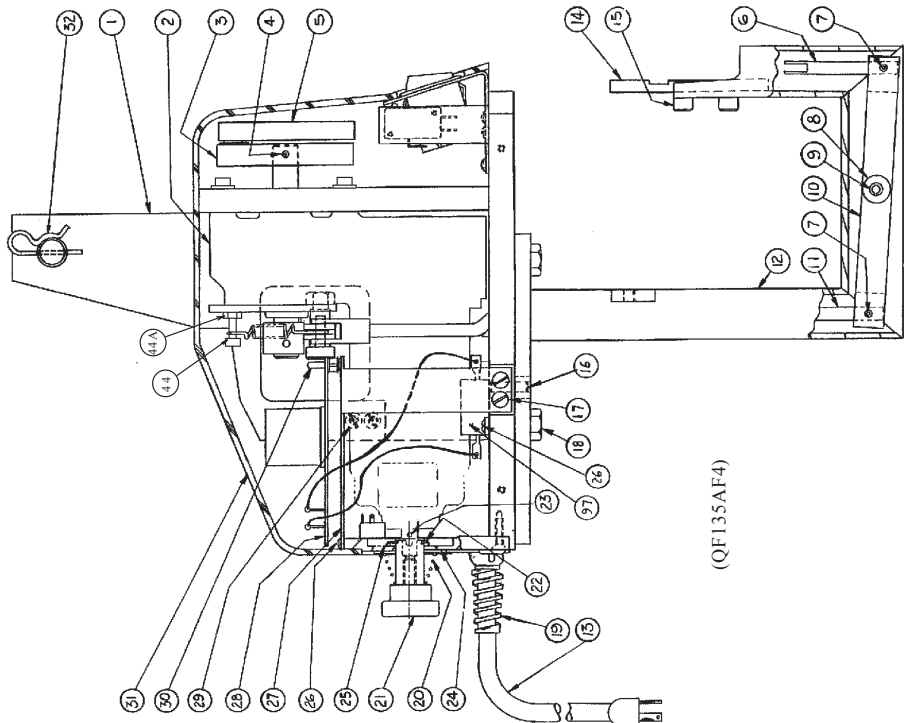


THICK POINT
ACTIVATED CLINCHER

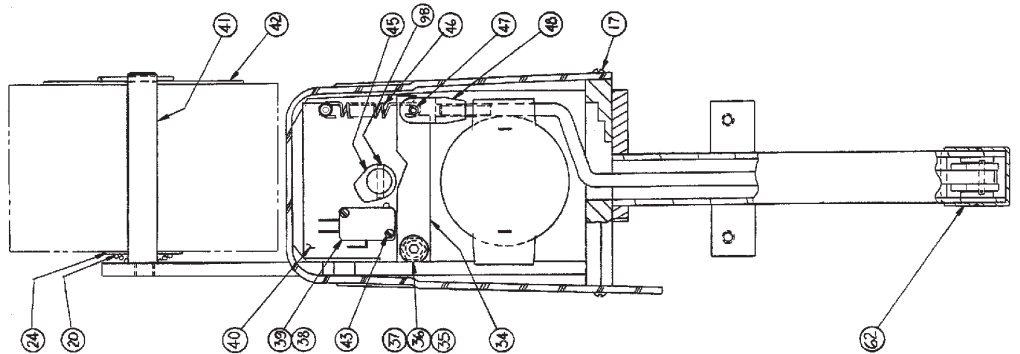
BYPASS
CLINCHER



(QF135AF3)



(QF135AF4)



(QF135AF1)

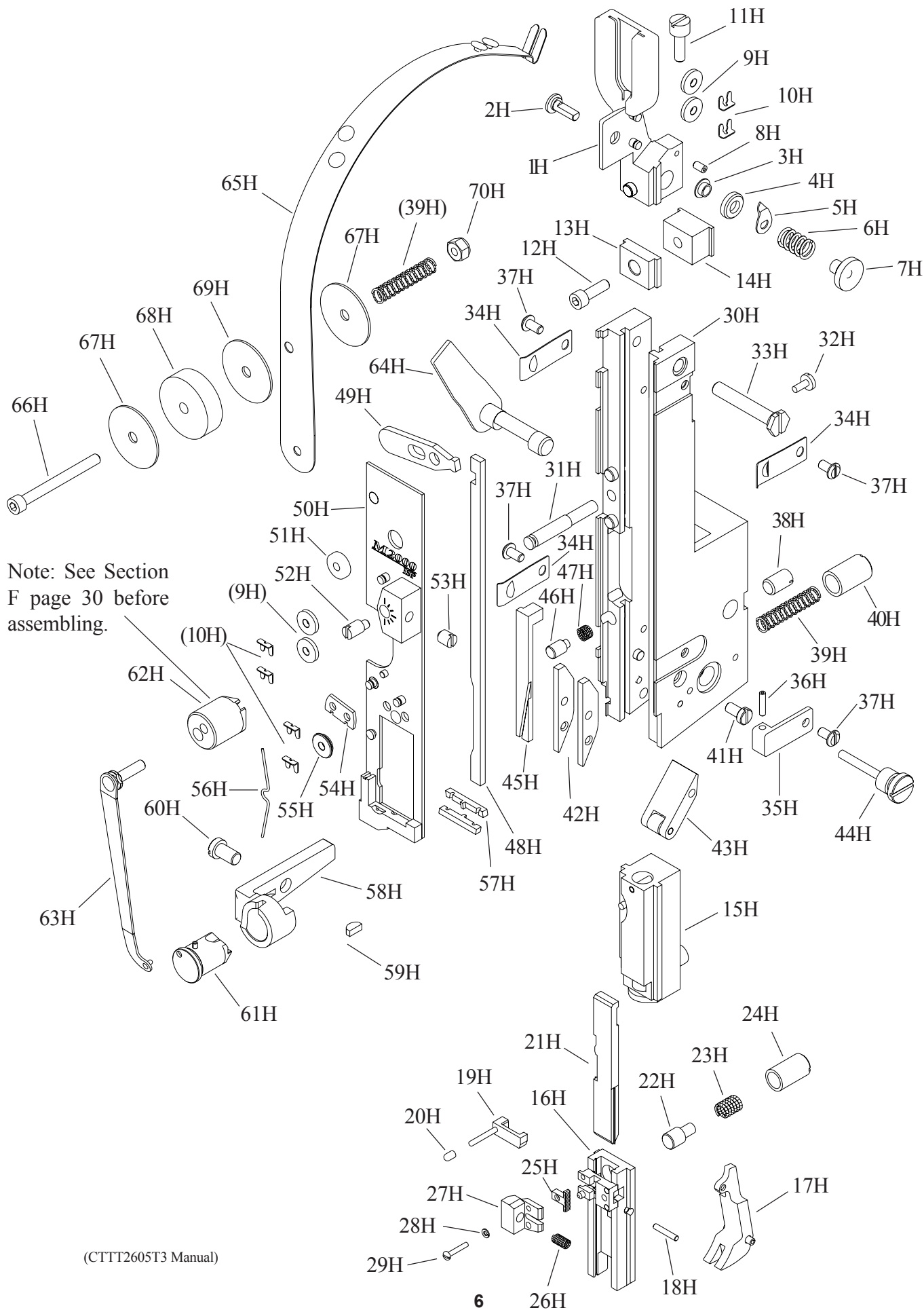
MODEL 405A, B, C

PARTS LIST

(See Pages 40A & 41A for M2000 HEAD Parts List.)

TEM	PART NO.	DESCRIPTION	QTY.
1	CK138	SUPPORT	1
2	CG115C	GEARMOTOR, 90 VDC (115 V.A.C.)	1
3	CKK81B	CRANK ASSEMBLY, DRIVE SHAFT	1
4	D32940F	PIN, ROLL, .125 x .88 Lg. (CRANK)	1
5	CA44E	HEAD OPERATING LINK	1
* 6	CK148A	ROD, CLINCHER, FRONT	1
* 7	D37769F	PIN, ROLL, .125 x .500	2
8	CT199	WASHER, .25 ID x .625 OD x .093	2
* 9	CB835Z	PIN, ROLL, .250 X 1.00 SST	1
* 10	CK145	LEVER, CLINCHER, ROCKER	1
* 11	CK147E	ROD, CLINCHER, REAR	1
12	CKK137A	STAND W/MT.	1
13	CB283J	CORD, POWER (115 V.A.C.)	1
14	CK151A	BRACKET, TABLE AND CLINCHER	1
15	D41440F	SCREW, .25-.28 x .375 SOC. HD. CAP	2
16	CB284A	PIN, DOWEL, .1875 X .75	1
17	CB401	SCREW 8-32 X .375 RD. HD.	6
18	D25947F	SCREW, .375-16 X .75 HEX HD.	4
19	CG162B	BUSHING, STRAIN RELIEF	1
20	CK180	SPRING, COMP., CONICAL	2
21	CKK193C	KNOB ASSEMBLY	1
22	CB837L	RING, RETAINING	1
23	CB835K2	PIN, ROLL, .093 x .437 LG.	1
24	CA114A	WASHER, FLAT, .625 ID x 1.5 OD x .04	2
25	CA230	WASHER, .562 ID, .75 OD x .030 FLAT	1
26	CG14A	SCREW, 4-40 x .50 RD. HD.	4
27	CK182	BRACKET, CIRCUIT BOARD	1
28	CK162	BOARD, CIRCUIT (115 V.A.C.)	1
29	Not used	-----	
30	CK183	SUPPORT, PC BOARD	4
31	CK174D	COVER	1
32	CK176	COTTER, HAIRPIN	1
33	Not used	-----	
* 34	CK144	LEVER, CLINCHER OPERATING	1
* 35	CB102A	NUT, .312-18 UNC 2B HEX	1
* 36	CK181	WASHER, .390 ID x .625 OD x .062	7
* 37	CB1421G	SHOULDER SCREW, .375 DIA. x .75 LG.	1
38	CG17	SPACER, LIMIT SWITCH	3
39	CG15	SWITCH, LIMIT	2
40	CK143A	BRACKET, SWITCH, CAM	1
41	CA45B	STUD, SPOOL WIRE	1
42	CA139	SPOOL RETAINER	1
43	CB56R	SCREW, 4-40 x .75 SOC. HD. CAP	2
44	CB1090	SCREW, 10-32 x 1.00 SOC. HD. CAP	1
44A	CB475	NUT, 10-32	1
45	CK149	CAM	1
* 46	CK180A	SPRING, EXTENSION	1
* 47	D30610F	PIN, ROLL, .187 x .625 LG.	1
* 48	CK146	CLEVIS	1
49	CK106A	CONNECTOR	1
49A	CK195	LATCHING BLOCK	2
49B	CB56R	SCREW, 4-40 x .75 LG. SOC. HD. CAP	2
49C	CK272	SPACER	1
50	CB55F	SCREW, 4-40 x .375 FL. HD.	2
51	CK163	CIRCUIT BRKR ASSEMBLY (115 V.A.C.)	1
52	CB206B	SCREW, 8-32 x .625 FL. HD.	2
53	CK164B	WASHER, FLAT PHENOLIC, .141 DIA.	1
54	CK164	WASHER, SWEDGED FIBRE, .141 DIA.	1
55	CG190B	PHONE JACK, .141 DIA.	1
56	CK167E	PANEL, CONTROL, REAR (115 V.A.C.)	1
57	CK164C	WASHER, FLAT PHENOLIC, .097 DIA.	2
58	CK164A	WASHER, SWEDGED FIBRE, .097 DIA.	2
59	CG190A	PHONE JACK, .097 DIA.	2
60	CK98B	DECAL, NAME, RATING, S/N (115 V.A.C.)	--
61	CB287B	SCREW, 6-32 X .312 RD. HD.	8
62	CK194	GUARD, LEVER	1
63	CF1990W2	DECAL, BINDERYMATE (Not Shown)	2
64	Not used	-----	
65	CTT9002	BONNET CLAMP ASSEMBLY	1
66	CB-619	SCREW, .250-20 x 1 FL. HD.	2

TEM	PART NO.	DESCRIPTION	QTY.
67	CK134	BASE	1
68	Not used	-----	
69	CK190	BRACKET, SW., SAFETY	1
70	CK135A	PLATE, MOTOR, MTG.	1
71	CK271	SCREW, 10-32 x 2.25 SOC. HD. CAP	4
71A	CB371	LOCKWASHER, No. 10	4
72	CB56P	SCREW, 5-40 x .75 SOC. HD	8
73	CK172	BRACKET, SWITCH, ON-OFF	1
74	CB285P2	SWITCH, ON-OFF ILLUM. (115V.A.C.)	1
75	CK192	PIN, PIVOT, BLOCK	2
76	CK191	BLOCK, PIVOT, GUARD	1
77	CF1989	WASHER, #6 FLAT	2
78	CK186	SPRING/SUPPORT, GUARD	1
79	CK187	GUARD, FRONT (305B,C)	1
	CK187B	GUARD, FRONT (305A,)	1
80	CB1262	WASHER, #10, FLAT	2
81	CA9067B	NUT, ECCENTRIC, WIRE STR.	2
82	CK188	GUARD, SLIDING, FRONT	1
83	CK189	BOLT, 10-24 x .50 CARRIAGE	2
<hr/> CLINCHER TYPES <hr/>			
<u>ACTIVATED BYPASS (MODELS 405A)</u>			
84	CTT9086R	CLINCHER PLATE ASSY.	1
85	CT9093A2	CLINCHER SLIDE	1
86	CA9083A	CLINCHER POINTS	2
87	CA9085G	SLIDE RETAINER PLATE	1
88	CB2166C	SCREW,	2
89	D142677	LOCKWASHER	2
90	CB835T	PIN, ROLL, .062 x .312	1
91	CB154	SCREW, 10-32 x .625 SOC. HD. CAP	2
<u>ACTIVATED THICK POINTS (MODELS 405B)</u>			
92	CTT9086A	ACTIVATED CLINCHER ASSEMBLY	1
93	CA9083A	CLINCHER POINTS	2
94	CA9085H	CLINCHER SLIDE BRACE	1
95	CB651	SCREW, 10-32 x .500 SOC. HD. CAP.	2
96	CA2095J	CLINCHER SLIDE	1
90	CB835T	PIN, ROLL, .062 x .312	1
<hr/>			
97	CKK234	RESISTOR ASSEMBLY	1
98	D38063F	PIN, ROLL, .125 x .625	1
 * THESE ITEMS ARE OMITTED ON MODEL 405C			



M2000 HEAD

PARTS LIST

The following parts listing (from index numbers 1H through 70H) is for the Bindery Mate's M2000 Heads: CTTT2605U3, & CTTT2605V3.

All parts listed are common to both stitchers, except where noted.

ITEM	PART NO.	DESCRIPTION	QTY
1H	CAAA9074A2	WIRE GUIDE BRACKET ASSEMBLY NOTE: The above Wire Guide Bracket Assembly includes the following items through item 11H:	1
1H	CAA9074A2	WIRE GUIDE BRACKET SUB-ASSEMBLY	1
2H	CA9146A	ECCENTRIC SCREW	1
3H	CA9068	ECCENTRIC FRICTION BUSHING	1
4H	CA9065	ECCENTRIC ROLL	1
5H	CA9070	ECCENTRIC POINTER	1
6H	CA9069	ECCENTRIC SPRING	1
7H	CA9067	ECCENTRIC NUT	1
8H	D31028F	SET SCREW	1
9H	CA9103C	WIRE STRAIGHTENER ROLL	2
10H	CA9124	TENSION ROLL CLIP	2
11H	CA9076	WIRE GUIDE SPRING BRKT ADJ SCREW	1
12H	CB77	FACE PLATE LOCATING BLOCK SCREW	1
13H	CT2606	FACE PLATE LOCATING CLAMP	1
14H	CT2607	FACE PLATE LOCATING BLOCK	1
15H	CAA2623C	DRIVING SLIDE ASSEMBLY NOTE: The above assembly includes the following parts:	1
	CA2623B	DRIVING SLIDE (ONLY)	
	CA2007A	DRIVING SLIDE SPRING PLUNGER	
	CA9006A	DRIVING SLIDE SPRING	
	D37327F	DRIVING SLIDE SPRING PIN	
	CA9028	DRIVING SLIDE ROTATOR OPERATING PIN	
16H	CAAA9013Z2	BENDER BAR ASS'Y COMPLETE 1/2" CROWN #25 TO #30 RD. WIRE NOTE: The above Bender Bar Assembly includes the following items through item 29H	1
16H	CAA9013U	BENDER BAR SUB ASSEMBLY 1/2" CROWN #25 TO #30 RD. WIRE	1
17H	CAA9026	SUPPORTER ASSEMBLY 1/2" CROWN	1
18H	CA9029	SUPPORTER PIVOT PIN	1
19H	CAA9014J	BENDER BAR LATCH ASSEMBLY	1
20H	CA173	PLASTIC CAP	1
21H	CA9012M	DRIVER BAR ASSEMBLY 1/2" CROWN	1
22H	CA9112A	BENDER BAR FRICTION PLUG	1
23H	CA9113A	BENDER BAR FRICTION PLUG SPRING	1
24H	CA9115	BENDER BAR FRICTION BUSHING	1
25H	CA9015D	GRIP	1
26H	CA168	GRIP SPRING	1
27H	CT413A	SPRING HOUSING	1
28H	CB371K	LOCKWASHER	1
29H	CA9024A	GRIP RETAINING CLIP SCREW	1
30H	CTT2604G	BONNET CASTING SUB ASSEMBLY (CTTT2605U3)	1
	CTT2604N	BONNET CASTING SUB ASSEMBLY (CTTT2605UV)	1
31H	CA9127	ROTATOR OPERATING CAM STUD	1
32H	CA9058	ROTATOR OPERATINGCAM STUD SCREW	1
33H	CA9075	WIRE GUIDE BRACKET SCREW	1
34H	CA9056C	FACE PLATE RETAINING CLIP	3
35H	CA9056A	FACE PLATE RETAINING CLIP (CTTT2605U3)	1
	CA9056D	FACE PLATE RETAINING CLIP (CTTT2605V3)	1
36H	CK213	SCREW, 4-40 X.500 SOC. HD. SET	1
37H	CA2081	FACE PLATE RETAINING CLIP SCREW	4
38H	Not Used	-----	
39H	CA9032C	SUPPORTER SPRING	1
40H	CA9037	SUPPORTER SPRING BUSHING	1
41H	CA9081	SUPPORTER GUIDE PLATE SCREW	2

ITEM	PART NO.	DESCRIPTION	QTY
42H	CA9030	SUPPORTER GUIDE PLATE	2
43H	CAA9036B	SUPPORTER SPRING LEVER	1
44H	CA9034	SUPPORTER SPRING LEVER SCREW	1
45H	CA9049A	WIRE CUTTER OPERATING SLIDE 1/2" CR.	1
46H	CA9050A	WIRE CUTTER OP. SLIDE FRICTION PLUG	1
47H	CA9051A	WIRE CUTTER OP. SLIDE FRICTION PLUG SPRING	1
48H	CA9022J	GRIP RELEASE SLIDE 1/2" CROWN	1
49H	CA9025	FACE PLATE ADJUSTING LEVER (CTTT2605U3)	1
	CA9025F	FACE PLATE ADJUSTING LEVER (CTTT2605V3)	1
50H	CAAA2132Y	FACE PLATE ASSY. 1/2" CROWN #22 TO #30 RD. WIRE (CTTT2605U3)	1
	CAAA2132W	FACE PLATE ASSY. 1/2" CROWN #22 TO #30 RD. WIRE (CTTT2605V3)	1
		NOTE: The above Face Plate Assembly includes the following items through item 56H	
(9H)	CA9103C	WIRE STRAIGHTENER ROLL	2
(10H)	CA9124	TENSION ROLL CLIP	4
50H	CAA2132Y	FACE PLATE SUB ASSY. 1/2" CROWN #22 TO #30 RD. WIRE (CTTT2605U3)	1
	CAA2132W	FACE PLATE SUB ASSY. 1/2" CROWN #22 TO #30 RD. WIRE (CTTT2605V3)	1
51H	CA9065A	WIRE STRAIGHTENER ECCENTRIC ROLL	1
52H	CA9066A	WIRE STRAIGHTENER ECCENTRIC	1
53H	CA172	ECCENTRIC FRICTION LOCKING SCREW	1
54H	CA9098	TENSION PAWL	1
55H	CA9103A	CHECK PAWL ROLLER	1
56H	CA9134	TENSION PAWL SPRING	1
57H	CA9048	WIRE CUTTER	2
58H	CA9043M	ROTATOR HOLDER #25 TO #30 RD. WIRE	1
59H	CB75B	KEY, WOODRUFF	1
60H	CA9044A	ROTATOR HOLDER SCREW	1
61H	CAA9038E	ROTATOR ASSEMBLY COMPLETE, 1/2" CR.	1
62H	CA9163D	ROTATOR OPERATING CAM	1
63H	CAA9046D	ROTATOR OPERATING SPRING ASSEMBLY	1
64H	CTT9003D	BONNET CLAMP ECCENTRIC	1
65H	CTTT2133C2	WIRE GUIDE ASSEMBLY NOTE: The above Wire Guide Assembly includes the following items through item 70H:	1
(39H)	CA9032C	SUPPORTER SPRING	1
65H	CTT2133C2	WIRE GUIDE SUB-ASSEMBLY	1
66H	CB651E	SCREW	1
67H	CA9651	WASHER	2
68H	CA9652	FELT WASHER, THICK	1
69H	CA9653	FELT WASHER, THIN	1
70H	CB860B	NUT	1

WHERE USED		
M2000 Head		Model
CTTT2605U3		405A
CTTT2605V3		405B 405C

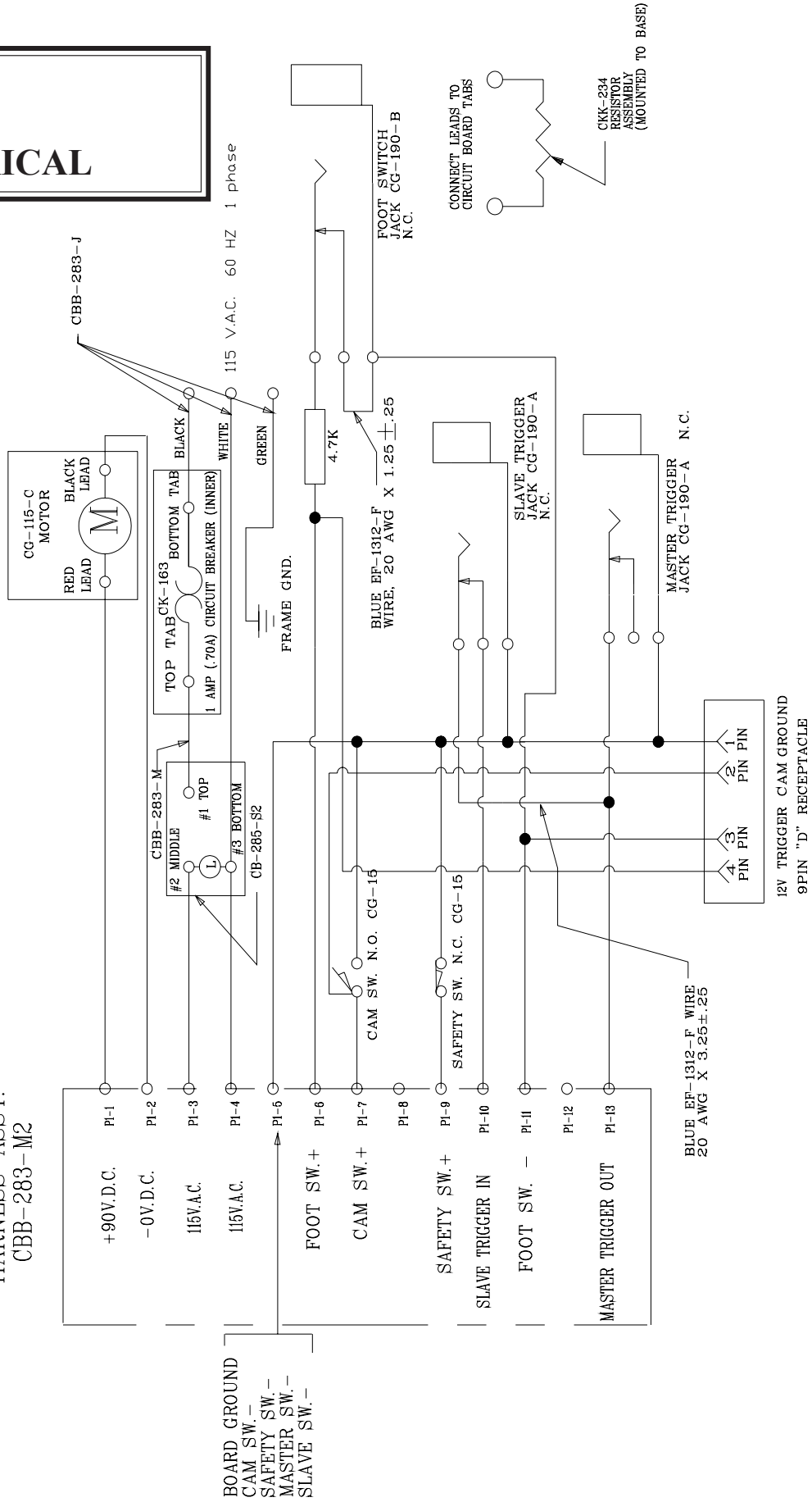
Section 7 ELECTRICAL

ELECTRICAL SCHEMATIC 115 VAC

MODEL 405A, 405B, 405C

(SK828K)

HARNES ASSY.
CBB-283-M2



REGISTRATION

To better service your wire stitching needs, please take a moment to fill out and return this registration card.

Name: _____
(First) (Middle Initial) (Last)
Company: _____
Street Address: _____
City: _____ State/Province: _____ Zip: _____
Country: _____
Phone: _____ Fax: _____ E-mail: _____

CUSTOMER

Machine(s) Purchased: _____
Serial Number(s): _____
With Head(s): _____
(Type/Quantity Purchased)
Serial Number(s): _____
Head(s) Purchased: _____
Serial Number(s): _____

PRODUCT

Date Received: _____
Dealer Name: _____
Dealer Street Address: _____
City: _____ State/Province: _____ Zip: _____
Country: _____
Dealer Phone: _____

DEALER

Other Bindery Products Used: _____

Please take a moment to fill out the attached card and mail it to DeLuxe Stitcher Company, Inc..
In addition, duplicate the information for your records to assist when making further inquiries.

PRODUCT

Machine(s) Purchased: _____
Serial Number(s): _____
With Head(s): _____
(Type/Quantity Purchased)
Serial Number(s): _____
Head(s) Purchased: _____
Serial Number(s): _____

DE LUXE STITCHER GRAPHIC ARTS REPRESENTATIVE

Date Received: _____
Dealer Name: _____
Dealer Street Address: _____
City: _____ State/Province: _____ Zip: _____
Country: _____
Dealer Phone: _____

Would you like information sent to you about new products that would benefit your company? Yes No

Common Replacement Parts for 1/2" Crown

Below is a list of the most common wear/replacement parts for the DB75 and 75V Stitcher Head. This guide should help you when ordering replacement parts. If the part you need is not listed below, please refer to the more detailed parts list on pages 47 - 48.

Description	Item Number
Moving Cutter - Carbide	070145C
Driver (DB75) - 25-28	070152-25 or 070552-25
Wire Holder Retaining Spring	070183
Cutter Operating Lever	070230
Fixed Cutter - Carbide	070600C
Moving Cutter Screw	072014
Screw, M4x0.7x6-Nylon	072018
Rivet	073008
Hook Pivot Pin, Nylon	073009
Wire Holder Spring	074001
Hook Guide	077011
Bender Slide Insert	077012
Clincher Slide Assembly	077014
Clincher Point 1/2"	077015
Clincher Point Pivot	077018-2

PLACE
STAMP
HERE

DELUXE STITCHER
COMPANY, INC.
3747 N Acorn Lane
Franklin Park, IL 60131 U.S.A.
Attn: Customer Service

LIMITED WARRANTY

DeLuxe Stitcher Company, Inc. warrants to the original retail purchaser that this product is free from defects in material and workmanship and agrees to repair or replace, at DeLuxe Stitcher's option, any defective product within 90 days from the date of purchase. This warranty is not transferable. It covers damage resulting only from defects in material or workmanship and does not cover conditions or malfunctions resulting from normal wear, neglect, abuse or accident.

This warranty is in lieu of all other express warranties. Any warranty of merchantability or fitness for a particular purpose is limited to the duration of this warranty. DeLuxe Stitcher shall not be liable for any incidental or consequential damages.

Some states do not allow limitations on how long an implied warranty lasts, or the exclusion or limitation of incidental or consequential damages, so the above limitations or exclusions may not apply to you. This warranty gives you specific legal rights and you may also have other rights which vary from state to state.

To obtain warranty service you must return the product, at your expense, together with proof of purchase to an authorized DeLuxe Stitcher Company Graphic Arts Dealer.



3747 Acorn Lane • Franklin Park • Illinois 60131
Phone: 847-455-4400 • 800-634-0810
Fax: 847-455-4900 • 800-417-9251
<http://www.deluxestitcher.com>